

WESTERN AND NORTHER SUBURBS AMATEUR RADIO CLUB VK3AWS

WANSARC NEWS

This edition produced by
Mark VK3PI



WIA Affiliated Club

November 2016

NOVEMBER—BUY, SWAP AND SELL

Our next meeting will be the last one at our club rooms for the year, so make sure you set aside the time to be there.

November is buy, swap and sell time so dust off that piece of gear you have been meaning to do something with and get it down to the clubrooms for others to admire.

The night's format is simple—bring something that you want to swap and sell, or have a pocket full of shekles to buy something that is on offer.

That's it! How simple.

You know the saying—a ham's rubbish may be something another ham

has been looking for!

If you are particularly happy with your sale or purchase, then by all means the club Treasurer will accept a gold coin donation from you.

So come along this **FRIDAY NOVEMBER 4 2016.**

Club rooms are open at **7.30pm** with the trading commencing anytime after **8pm.**

See you there!!



CLUB NET—HAVE A VOICE

The WANSARC club net is held every **TUESDAY** evening on 146.450MHz FM simplex.

The net commences at **8PM** and runs for 30 minutes or longer, based on the discussion topics and the number of stations on air.

Bob VK3VO, Charles VK3FCSC, Russell VK3XC, Cliff VK3CSL & Mark VK3PI are regulars.

Why not come up on air and let other members know what you have been up to? Non-club members also welcome!

**146.450 MHz FM
each TUESDAY
night commencing
at 8PM**

Melbourne QRP day by the bay

Melbourne QRP by the Bay is an event for those who like homebrew portable radio equipment, outdoors transmitting and QRP operating.

Format: Informal gathering. Bring yourself and any QRP related projects, equipment, antenna or accessories.

Location: Gather in Victory Park, Camp St, Chelsea. Grassed area near life saving club.

Venue, facilities and transport: By the bay 30km south of Melbourne. Grassed areas near water. Free barbecues and shelter if wet. Playground for children.

Parking nearby (eg supermarket). Please read signs to avoid a fine as ticketed parking is also nearby. Trains every 10 min (Frankston line) or direct buses from Doncaster, Nunawading, Glen Waverley or Springvale (902) every 30 min.

A great write-up on last November's appears at

<https://vk3hn.wordpress.com/2015/11/17/qrp-by-the-bay-saturday-14th-november-2015/>

If you're on Facebook the event page is at

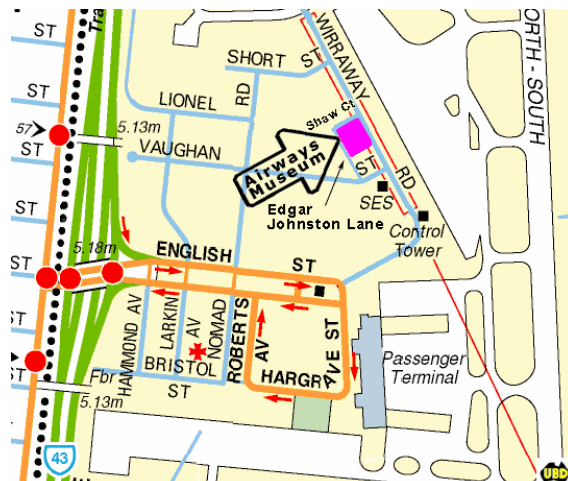
<https://www.facebook.com/events/348410778824001/>

AIRWAYS MUSEUM OPEN DAY

Concorde and Australia is the theme of a new photographic exhibition to be unveiled at the 2016 Open Day at the Airways Museum on **Saturday 12 November 2016**. The exhibition will be on display for one year.

The museum will be open from 10am–5pm.

At 1pm a panel of guest speakers will relate their experiences with Concorde, including passengers, airport managers and engineers.



Concorde and Australia



A Special Exhibition at the
Civil Aviation Historical Society
& Airways Museum
Shaw Ct, Essendon Airport
Saturday November 12th 2016, 10am-5pm



Details: www.airwaysmuseum.com
Enquiries: Roger Meyer (03) 9818 4950 or Phil Vabre (03) 9432 9287

Club Christmas dinner December 1 2016

Yes, it's official—the club dinner will be held on THURSDAY December 1, 2016.

3 course meal— menu will be circulated shortly.

Members \$29 (20% subsidy by club on full price)

Non—members \$35

Payment can be made to the club using the following details:

Bank Name: Bendigo Bank
 BSB Number: 633-000
 Account Number: 139996052
 Account Name: Western and Northern Suburbs
 Amateur Radio Club

QUOTE your **CALLSIGN** and **"2016 DINNER"** as the reference.

Otherwise you can pay the Treasurer directly at this Friday's club night.

The response to the initial email to club members has been encouraging.

So get on to this now—**FINAL numbers are re-quired by November 21, 2016.**

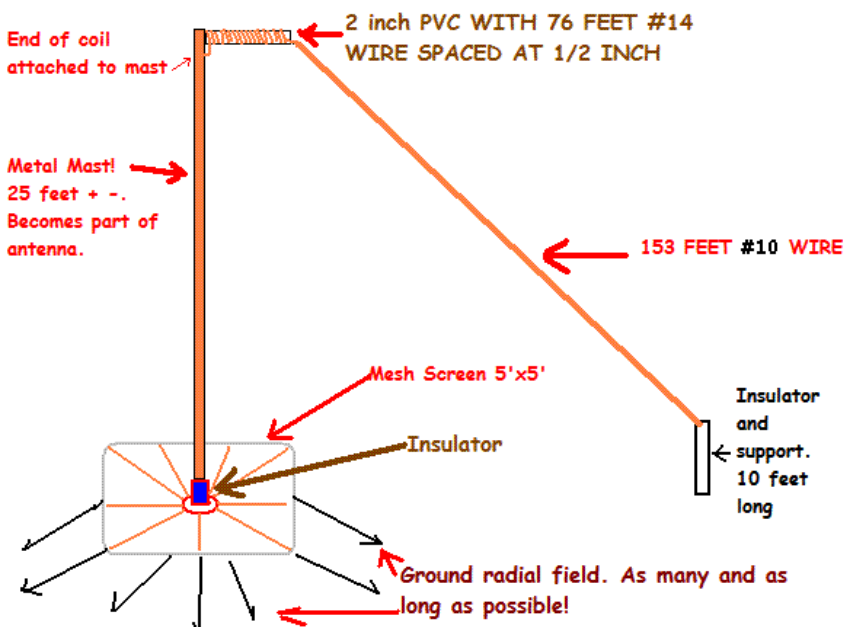


Two of three prizes available to those partaking in the club dinner this year!

The third is a VHF/UHF Diamond X200 antenna.

Come along, have some fun and you could be a winner!!

EXPERIMENTER'S CORNER



NOTES:

254 FEET = 1/2 wave on 160 meters. Design uses 30% of total length for coil winding.

$254 \times 30\% = 76$ feet for total wire length in coil.

76 feet in coil + 25 foot mast = 101 feet.

254 feet total minus 101 feet = 153 feet for sloper section.

Terminate Coax center conductor to base of mast above insulator. Coax shield to mesh screen/radial field. Drawing not to scale!

Here is an interesting antenna design for 160 metres from KL7JR.

The measurements given may be able to be scaled down for other bands, particularly on 40m.

Note the comment on radials—interesting. Some antenna theorists advise that as little as 4 radials may be adequate, 8 better, 16 better still, however if you have more than 16 the effort vs gain diminishes.

This is a coaxial fed antenna, with the centre conductor connected to the metal mast just above the insulator and the braid is attached to the mesh.

Wonder how fiddly this antenna is to tune?

Who will give this design a go?

Look forward to some members feedback.

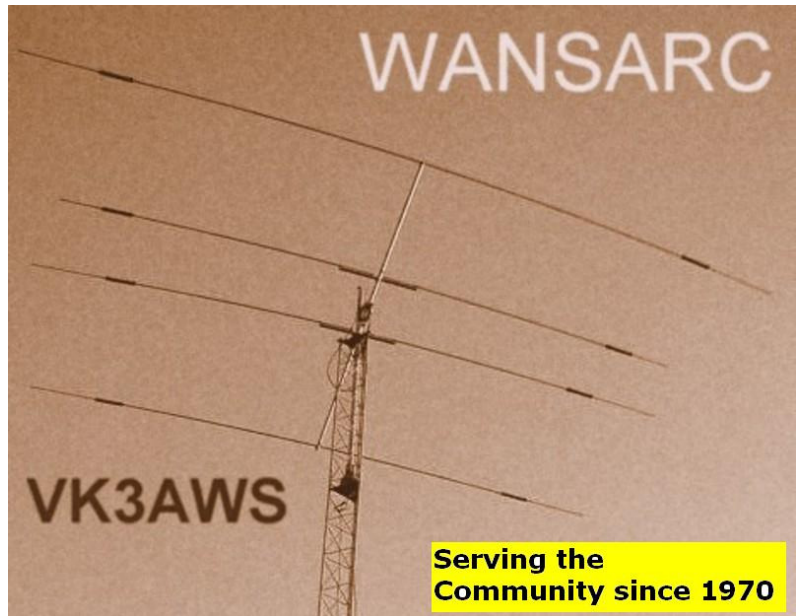
**WESTERN AND NORTHERN SUBURBS
AMATEUR RADIO CLUB (WANSARC)**

INCORPORATED A 7611 S

All correspondence to be addressed to the Secretary

POSTAL: WANSARC PO Box 336 RESERVOIR
Victoria 3073

Email: Secretary@wansarc.org.au



Find WANSARC on the
web

www.wansarc.org.au

WANSARC is a not for profit club providing a focal point for electronics and radio enthusiasts in the north and western suburbs of Melbourne.

The club was formed in 1970 and has continuously provided a service to its members and the community since its inception.

Meetings are held on the first Friday of every month, except December and January.

JOTA 2016—a short report

Club President Graeme VK3NE and Secretary Mark VK3PI braved the windy conditions to support the Wyndham Girl Guides JOTA effort this year.

Both HF and VHF stations were in operation, with Mark directing traffic on 40m and Graeme on 2m.

Conditions on HF were initially very poor, however as the morning progressed short propagation signals improved.

VHF contacts proved a little elusive as well but like HF a few more stations were found as the day progressed.



Local VHF stations were worked, together with VK1, VK2, VK3, VK4 and VK7 stations on HF.

One highlight was contact with VK1BP, the official National JOTA station.

The operating procedures of participants out ranked some of the operating practices of seasoned amateurs.

This is a very worthwhile event and Graeme and Mark did WANSARC proud in assisting in this 2016 with the Wyndham Girl Guides Group.

Roll on to 2017.....

